



Opto Alignment

LAS-CalcuSurf 2D™ Application

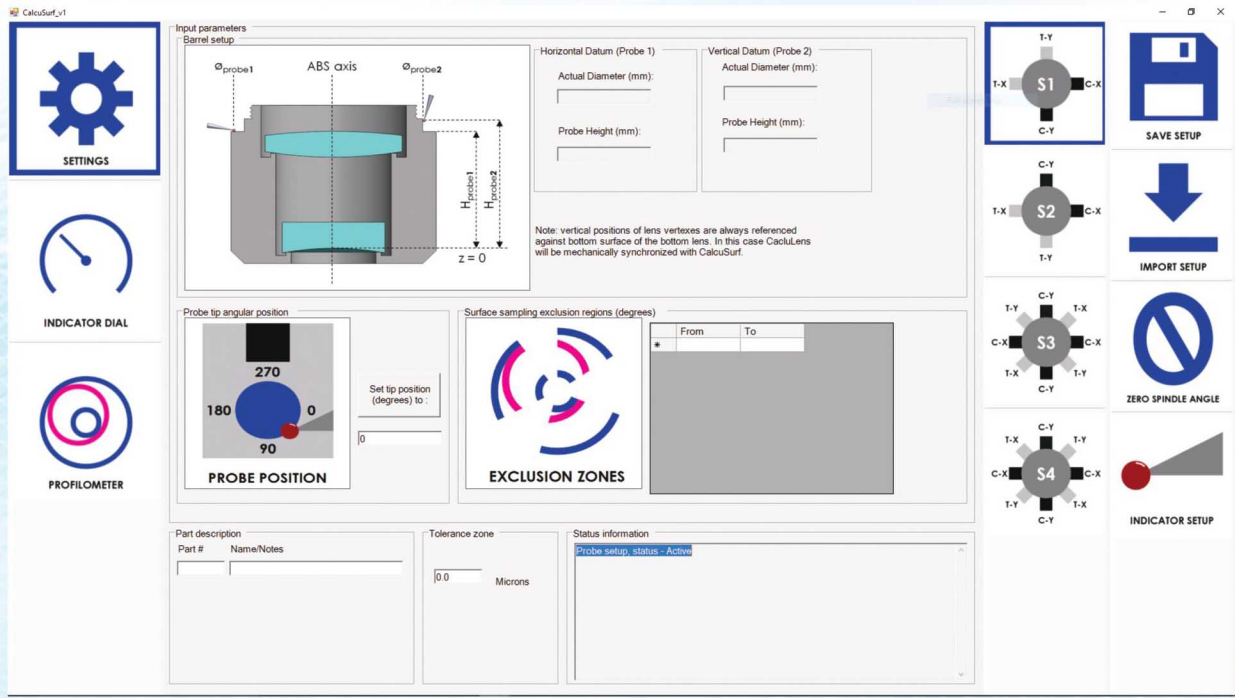
High-Resolution Digital TIR Probe & Software
for Precision Housing/Cell Alignment

- Quickly and easily measure alignment and form of mechanics with unmatched precision
- Align and profile to sub-micron TIR within seconds
- Both contact and non-contact probes available 100nm resolution, 200nm accuracy
- Dual probe option for simultaneous TIR profiling of centration and tilt datums
- Software GUI with probe setup, auto-scaling TIR dial, and real-time profile plotting options
- Passes residual errors to CalcuLens™ for improved accuracy of lens alignment
- Ease-of-use features allow operators of all skill levels to take precision measurements
- Powerful addition to the LAS for Manufacturing and Assembly Quality/Process Control



Designed and Built in the USA





CalcuSurf 2D™ Settings Window



CalcuSurf 2D™ TIR Dial:
With realtime auto-scaling
function



CalcuSurf 2D™ TIR Profile:
Best fit circle offset (red cross)
Realtime data (purple)
Best fit circle (red)



Contact TIR
LeverProbe with
Ruby Ball Tip



Non-Contact
Chromatic
Confocal
Probe